

# Agricultural Representatives on Water Partnerships

March 13, 2012  
Leduc, AB

# What is the AEPA?

- Partnership of government, industry & public stakeholders
- Created in 2008 as a way to work in partnership to proactively address agri-environmental issues
- Forum on agri-environmental policy issues; provide advice & input as a unified voice
- Consensus-decision making similar to Clean Air Strategic Alliance (CASA) & Alberta Water Council (AWC)



# Vision

Alberta's agriculture industry is profitable, accountable & recognized for its pro-active, responsible environmental stewardship

# Mission

The AEPA is an inclusive multi-stakeholder partnership of government, industry & public stakeholders working together to proactively address agri-environmental issues from a policy perspective



# AEPA Board Members

## Livestock Industry

- Poultry (4): Alberta Chicken Producers, Alberta Egg Producers, Alberta Turkey Producers, Alberta Hatching Egg Producers
- Beef (2): Alberta Beef & Alberta Cattle Feeders' Assn.
- Diversified (8): Alberta Elk Comm., Alberta Goat Breeders Assn., Alberta Lamb Producers, Alberta Reindeer Assn., Alberta Whitetail & Mule Deer Assn., Bison Producers of Alberta, Horse Industry Assn. of Alberta, Ostrich Assn. of Alberta
- Alberta Pork
- Alberta Milk

## Crop Industry

- Alberta Canola Comm.
- Alberta Pulse Growers
- Alberta Winter Wheat Comm.
- Alberta Barley Comm.
- Alberta Oat, Rye, and Triticale Assn.



## **Environmental Non-Government Organization**

- Ducks Unlimited Canada

## **Governments**

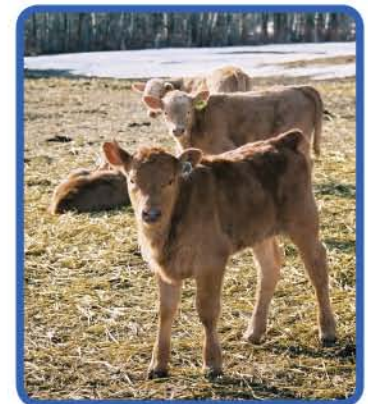
- Alberta Assn. of Municipal Districts & Counties
- Alberta Agriculture & Rural Development (ARD)
- Alberta Environment & Water (AEW)
- Alberta Sustainable Resource Development (SRD)

## **Liaison Member**

- Agriculture & Agri-Food Canada

## **Other Industry Involvement**

- Intensive Livestock Working Group
- Crop Sector Working Group



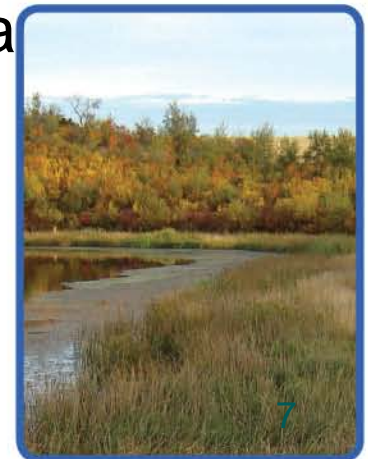
# Strategic Priorities

1. To **engage in land-use, water, & agri-environmental policy development processes**
2. To provide **policy input on innovations & business models** that will help the agriculture industry achieve AEPA desired outcomes
3. To **engage & build understanding** with members & industry partners to enable the agriculture industry to be a credible partner in agri-environmental policy development



# AEPA Land-use Framework (LUF) Advisory Team

- Implementation of AEPA LUF Communication & Engagement Strategy
- Development of Key Messages on various agri-environmental policy topics
- Consensus Key Messages:
  - Vision Document & Draft Lower Athabasca Regional Plan (LARP)
  - Regional Advisory Council (RAC)'s Advice to GoA on South Saskatchewan Regional Plan (SSRP)



# AEPA Water Advisory Team

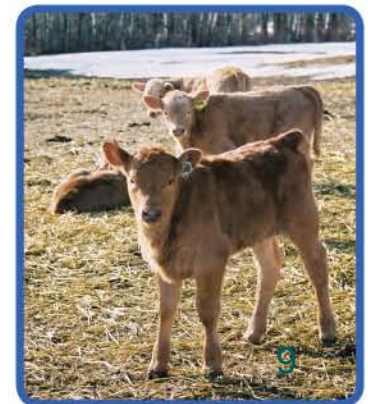
- Formed in 2011
- Development & implementation of AEPA Water Communication & Engagement Strategy
- Priority Issues:
  - Potential changes to current water allocation system
  - Water/watershed management plans & frameworks
  - New provincial wetland policy
- Engagement with Watershed Planning & Advisory Councils (WPACs)





# Going Forward

- Continue building ag's awareness & understanding of agri-environmental issues to ensure ag sector continues to have a credible voice in planning & development of agri-environmental policy;
  - Water policy
  - LUF related polices & strategies
  - Other (ie. environmental footprinting)



# Thank you

[www.agpartners.ca](http://www.agpartners.ca)